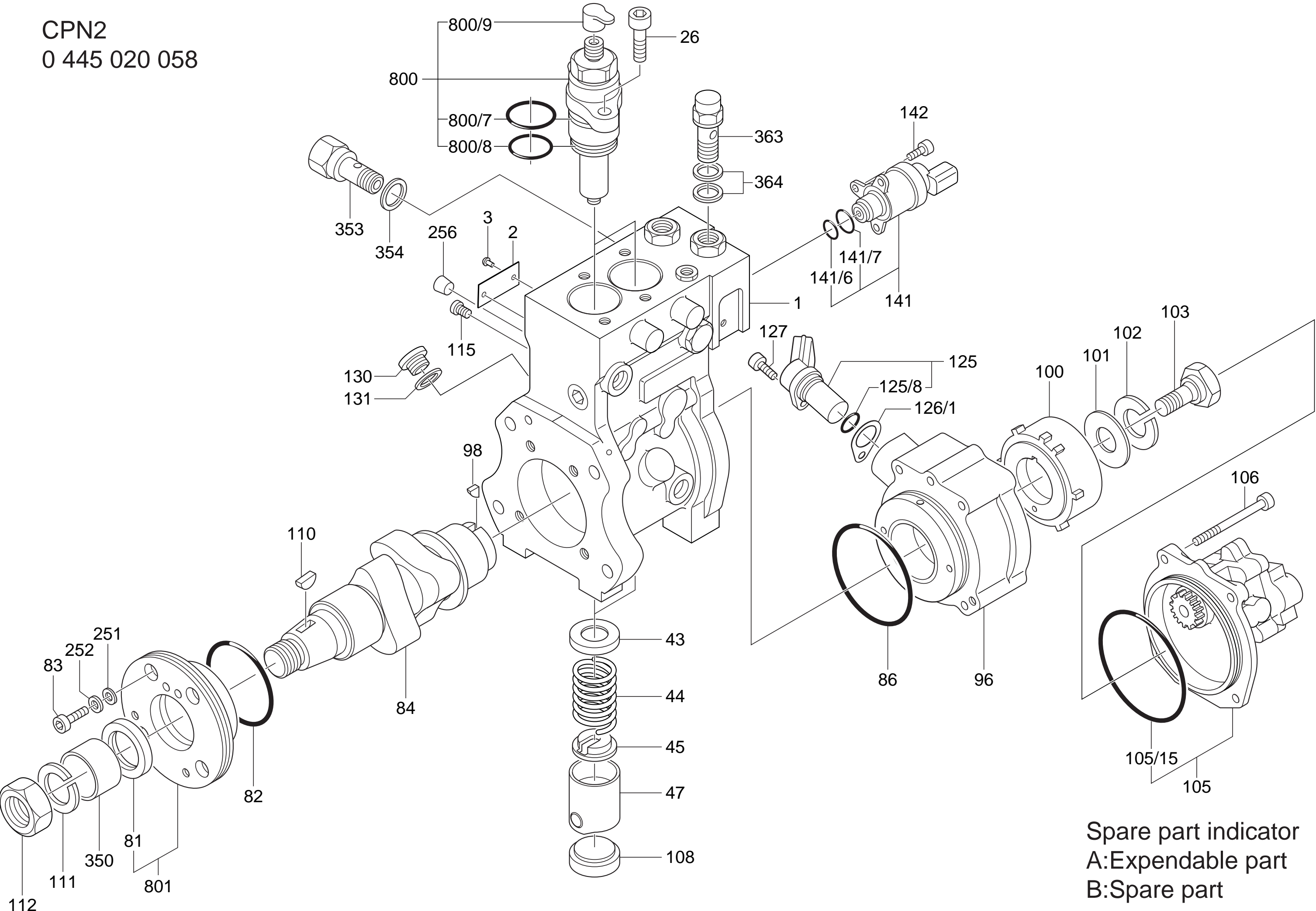


CPN2
0 445 020 058



Spare part indicator
A:Expendable part
B:Spare part

CPN2 PART LIST 0 445 020 058

KEY NO.	BOSCH NO.	PART NAME	SPARE PARTS	QTY	REMARKS
1	2 469 403 540	PUMP HOUSING	B	1	
2	2 469 403 590	NAME PLATE	B	1	
3	2 469 403 104	NAIL	B	2	
26	2 469 403 504	SOCKET HEAD BOLT	B	4	
43	2 469 403 061	SPRING SEAT	B	2	
44	2 469 403 062	COMPRESSION SPRING	B	2	
45	2 469 403 063	SPRING SEAT	B	2	
47	2 469 403 466	TAPPET	B	2	
81	2 469 403 198	RADIAL SEAL	A	1	
82	2 469 403 065	O RING	A	1	
83	2 469 403 039	TORX FILLISTER SCREW	B	4	
84	2 469 403 554	CAMSHAFT	B	1	
86	2 469 403 152	O RING	A	1	
96	2 469 403 319	BEARING END PLATE	B	1	
98	2 469 403 026	WOODRUFF KEY	A	1	
100	2 469 403 180	INTERNAL GEARED WHEEL	B	1	
101	2 469 403 035	WASHER	A	1	
102	2 469 403 036	CONICAL SPRING WASHER	A	1	
103	2 469 403 038	HEXAGON SCREW	A	1	
105	0 440 020 081	GEAR PUMP	B	1	Order from AA. See note below.
105/15	2440 210 044	O RING	A	1	Order from AA. See note below.
106	2 469 403 130	TORX FILLISTER SCREW	B	4	
108	2 469 403 066	PLUG	A	2	
110	2 469 403 068	WOODRUFF KEY	A	1	
111	2 469 403 550	SPRING LOCK WASHER	A	1	
112	2 469 403 551	HEXAGON NUT	A	1	
115	2 469 403 067	PLUG	A	2	
125	0 261 210 151	SPEED SENSOR	B	1	Order from AA. See note below.
125/8	2 260 210 310	O RING	A	1	Order from AA. See note below.
126/1	2 469 403 127	SHIM	B	1	t=0.1
126/1	2 469 403 128	SHIM	B	1	t=0.3
126/1	2 469 403 268	SHIM	B	1	t=0.4
127	2 469 403 072	TORX FILLISTER SCREW	B	1	
130	2 469 403 118	SCREW PLUG	B	1	
131	2 469 403 119	GASKET	A	1	
141	0 928 400 617	METERING UNIT	B	1	Order from AA. See note below.
141/6	1 928 300 718	O RING	A	1	Order from AA. See note below.
141/7	1 928 300 719	O RING	A	1	Order from AA. See note below.
142	2 469 403 351	BOLT	B	3	
251	2 469 403 053	GASKET	A	4	
252	2 469 403 214	SHIM	B	4	
256	2 469 403 222	PLUG	B	1	
350	2 469 403 529	PROTECTION SLEEVE	B	1	
353	2 469 403 530	OVER FLOW VALVE	B	1	
354	2 469 403 179	GASKET	A	1	
363	2 469 403 231	EYE BOLT	B	1	
364	2 469 403 094	GASKET	A	2	
800	2 469 403 622	HIGH PRESSURE ASSY	B	2	
800/7	2 469 403 022	SEAL RING	A	2	

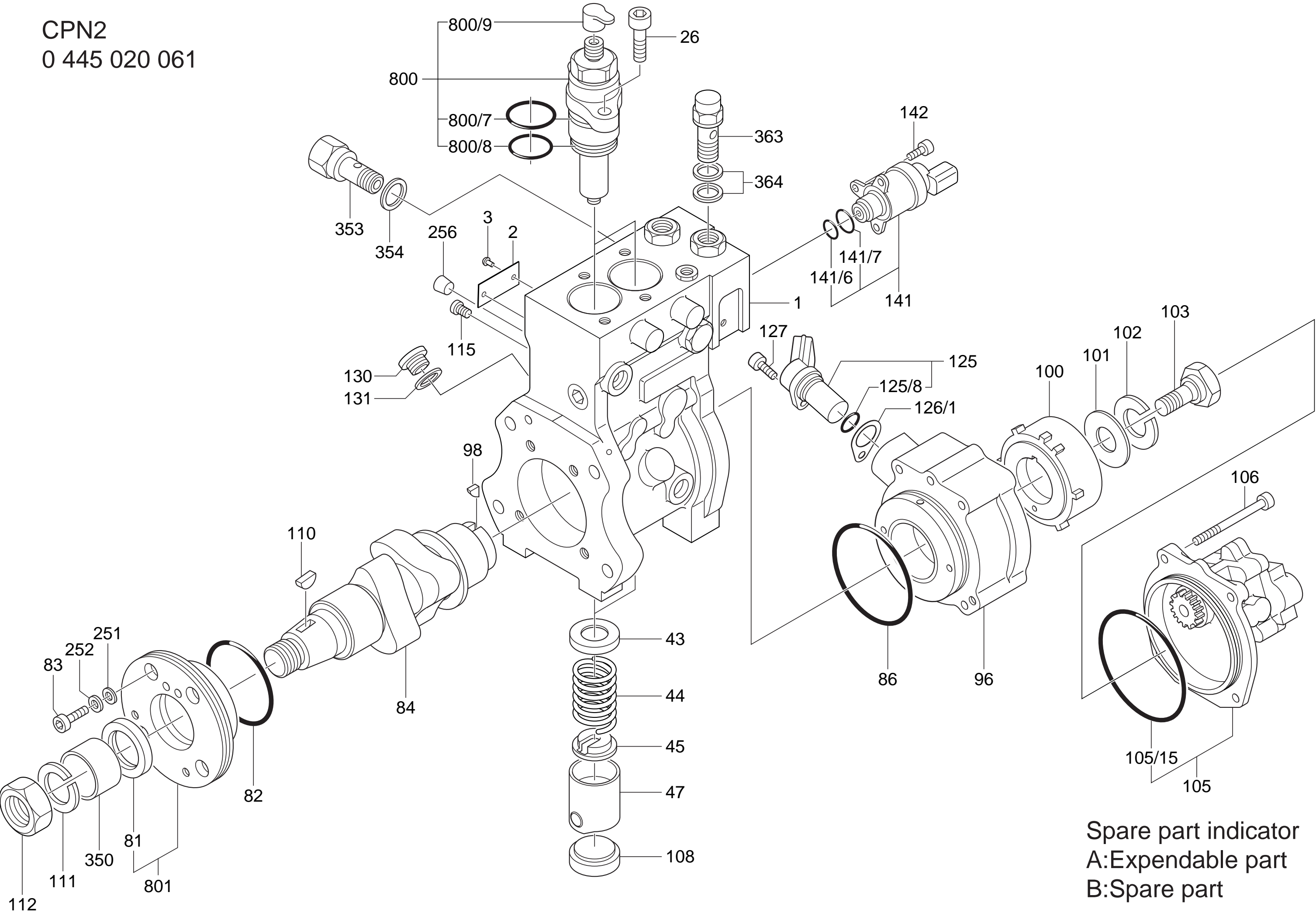
CPN2 PART LIST 0 445 020 058

KEY NO.	BOSCH NO.	PART NAME	SPARE PARTS	QTY	REMARKS
800/8	2 469 403 154	SEAL RING	A	2	
800/9	2 469 403 024	CAP	B	2	
801	2 469 403 763	BEARING END PLATE	B	1	

Note:

The distributor must order these parts directly from AA.

CPN2
0 445 020 061



Spare part indicator
A:Expendable part
B:Spare part

CPN2 PART LIST 0 445 020 061

KEY NO.	BOSCH NO.	PART NAME	SPARE PARTS	QTY	REMARKS
1	2 469 403 544	PUMP HOUSING	B	1	
2	2 469 403 590	NAME PLATE	B	1	
3	2 469 403 104	NAIL	B	2	
26	2 469 403 504	SOCKET HEAD BOLT	B	4	
43	2 469 403 061	SPRING SEAT	B	2	
44	2 469 403 062	COMPRESSION SPRING	B	2	
45	2 469 403 063	SPRING SEAT	B	2	
47	2 469 403 466	TAPPET	B	2	
81	2 469 403 198	RADIAL SEAL	A	1	
82	2 469 403 065	O RING	A	1	
83	2 469 403 039	TORX FILLISTER SCREW	B	4	
84	2 469 403 555	CAMSHAFT	B	1	
86	2 469 403 152	O RING	A	1	
96	2 469 403 319	BEARING END PLATE	B	1	
98	2 469 403 026	WOODRUFF KEY	A	1	
100	2 469 403 549	INTERNAL GEARED WHEEL	B	1	
101	2 469 403 035	WASHER	A	1	
102	2 469 403 036	CONICAL SPRING WASHER	A	1	
103	2 469 403 038	HEXAGON SCREW	A	1	
105	0 440 020 080	GEAR PUMP	B	1	Order from AA. See note below.
105/15	2 440 210 044	O RING	A	1	Order from AA. See note below.
106	2 469 403 130	TORX FILLISTER SCREW	B	4	
108	2 469 403 066	PLUG	A	2	
110	2 469 403 068	WOODRUFF KEY	A	1	
111	2 469 403 550	SPRING LOCK WASHER	A	1	
112	2 469 403 551	HEXAGON NUT	A	1	
115	2 469 403 067	PLUG	A	2	
125	0 261 210 151	SPEED SENSOR	B	1	Order from AA. See note below.
125/8	2 260 210 310	O RING	A	1	Order from AA. See note below.
126/1	2 469 403 127	SHIM	B	1	t=0.1
126/1	2 469 403 128	SHIM	B	1	t=0.3
126/1	2 469 403 268	SHIM	B	1	t=0.4
127	2 469 403 072	TORX FILLISTER SCREW	B	1	
130	2 469 403 118	SCREW PLUG	B	1	
131	2 469 403 119	GASKET	A	1	
141	0 928 400 617	METERING UNIT	B	1	Order from AA. See note below.
141/6	1 928 300 718	O RING	A	1	Order from AA. See note below.
141/7	1 928 300 719	O RING	A	1	Order from AA. See note below.
142	2 469 403 351	BOLT	B	3	
251	2 469 403 053	GASKET	A	4	
252	2 469 403 214	SHIM	B	4	
256	2 469 403 222	PLUG	B	1	
350	2 469 403 529	PROTECTION SLEEVE	B	1	
353	2 469 403 530	OVER FLOW VALVE	B	1	
354	2 469 403 179	GASKET	A	1	
363	2 469 403 231	EYE BOLT	B	1	
364	2 469 403 094	GASKET	A	2	
800	2 469 403 622	HIGH PRESSURE ASSY	B	2	
800/7	2 469 403 022	SEAL RING	A	2	

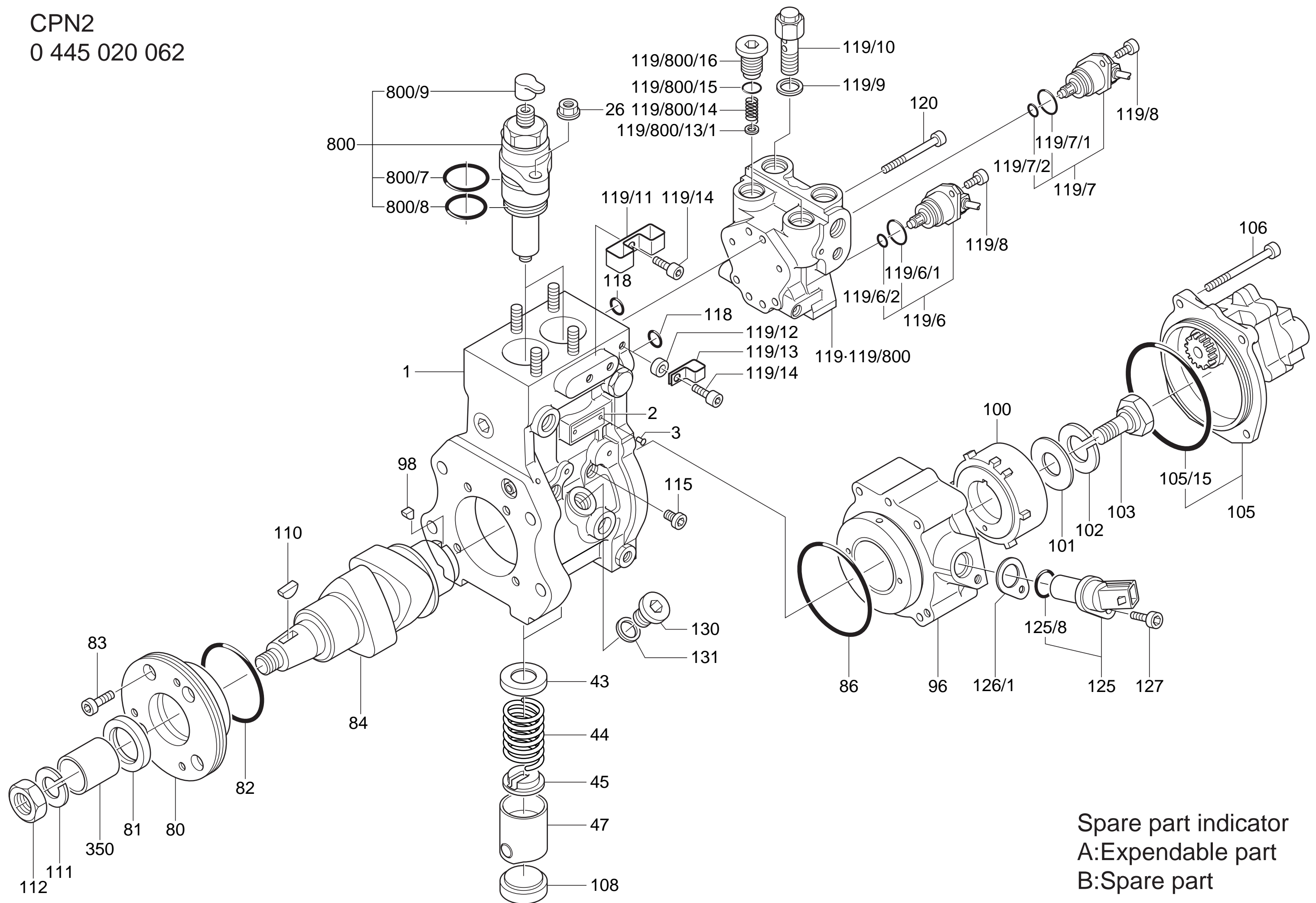
CPN2 PART LIST 0 445 020 061

KEY NO.	BOSCH NO.	PART NAME	SPARE PARTS	QTY	REMARKS
800/8	2 469 403 154	SEAL RING	A	2	
800/9	2 469 403 024	CAP	B	2	
801	2 469 403 763	BEARING END PLATE	B	1	

Note:

The distributor must order these parts directly from AA.

CPN2
0 445 020 062



Spare part indicator
A:Expendable part
B:Spare part

CPN2 PART LIST 0 445 020 062

KEY NO.	BOSCH NO.	PART NAME	SPARE PARTS	QTY	REMARKS
1	2 469 403 271	PUMP HOUSING	B	1	
2	2 469 403 571	NAME PLATE	B	1	
3	2 469 403 104	NAIL	B	2	
26	2 469 403 060	NUT	B	4	
43	2 469 403 061	SPRING SEAT	B	2	
44	2 469 403 062	COMPRESSION SPRING	B	2	
45	2 469 403 063	SPRING SEAT	B	2	
47	2 469 403 269	TAPPET	B	2	
80	2 469 403 184	BEARING END PLATE	B	1	
81	2 469 403 064	RADIAL SEAL	A	1	
82	2 469 403 065	O RING	A	1	
83	2 469 403 039	TORX FILLISTER SCREW	B	4	
84	2 469 403 033	CAMSHAFT	B	1	
86	2 469 403 152	O RING	A	1	
96	2 469 403 317	BEARING END PLATE	B	1	
98	2 469 403 026	WOODRUFF KEY	A	1	
100	2 469 403 180	INTERNAL GEARED WHEEL	B	1	
101	2 469 403 035	WASHER	A	1	
102	2 469 403 036	CONICAL SPRING WASHER	A	1	
103	2 469 403 038	HEXAGON SCREW	A	1	
105	0 440 020 028	GEAR PUMP	B	1	Order from AA. See note below.
105/15	2 440 210 044	O RING	A	1	Order from AA. See note below.
106	2 469 403 130	TORX FILLISTER SCREW	B	4	
108	2 469 403 066	PLUG	A	2	
110	2 469 403 068	WOODRUFF KEY	A	1	
111	2 469 403 040	SPRING LOCK WASHER	B	1	
112	2 469 403 041	HEXAGON NUT	B	1	
115	2 469 403 067	PLUG	A	2	
118	2 469 403 070	SEAL RING	A	2	
119	2 469 403 126	METERING UNIT	B	1	
119/6	0 281 002 314	SOLENOID OPERATED VALVE	B	1	Order from AA. See note below.
119/6/1	1 280 210 800	O RING	A	1	Order from AA. See note below.
119/6/2	1 280 210 801	O RING	A	1	Order from AA. See note below.
119/7	0 281 002 313	SOLENOID OPERATED VALVE	B	1	Order from AA. See note below.
119/7/1	1 280 210 800	O RING	A	1	Order from AA. See note below.
119/7/2	1 280 210 801	O RING	A	1	Order from AA. See note below.
119/8	2 469 403 072	TORX FILLISTER SCREW	B	4	
119/9	2 469 403 179	GASKET	A	1	
119/10	2 469 403 253	OVER FLOW VALVE	B	1	
119/11	2 469 403 078	CLIP	B	1	
119/12	2 469 403 080	SPACER	B	1	
119/13	2 469 403 185	CLIP	B	1	
119/14	2 469 403 072	TORX FILLISTER SCREW	B	2	
119/800	2 469 403 260	HOUSING	B	1	
119/800/13/1	2 469 403 106	SHIM	B	2	t=0.05
119/800/13/1	2 469 403 107	SHIM	B	2	t=0.1
119/800/13/1	2 469 403 108	SHIM	B	2	t=0.2
119/800/13/1	2 469 403 109	SHIM	B	2	t=0.3

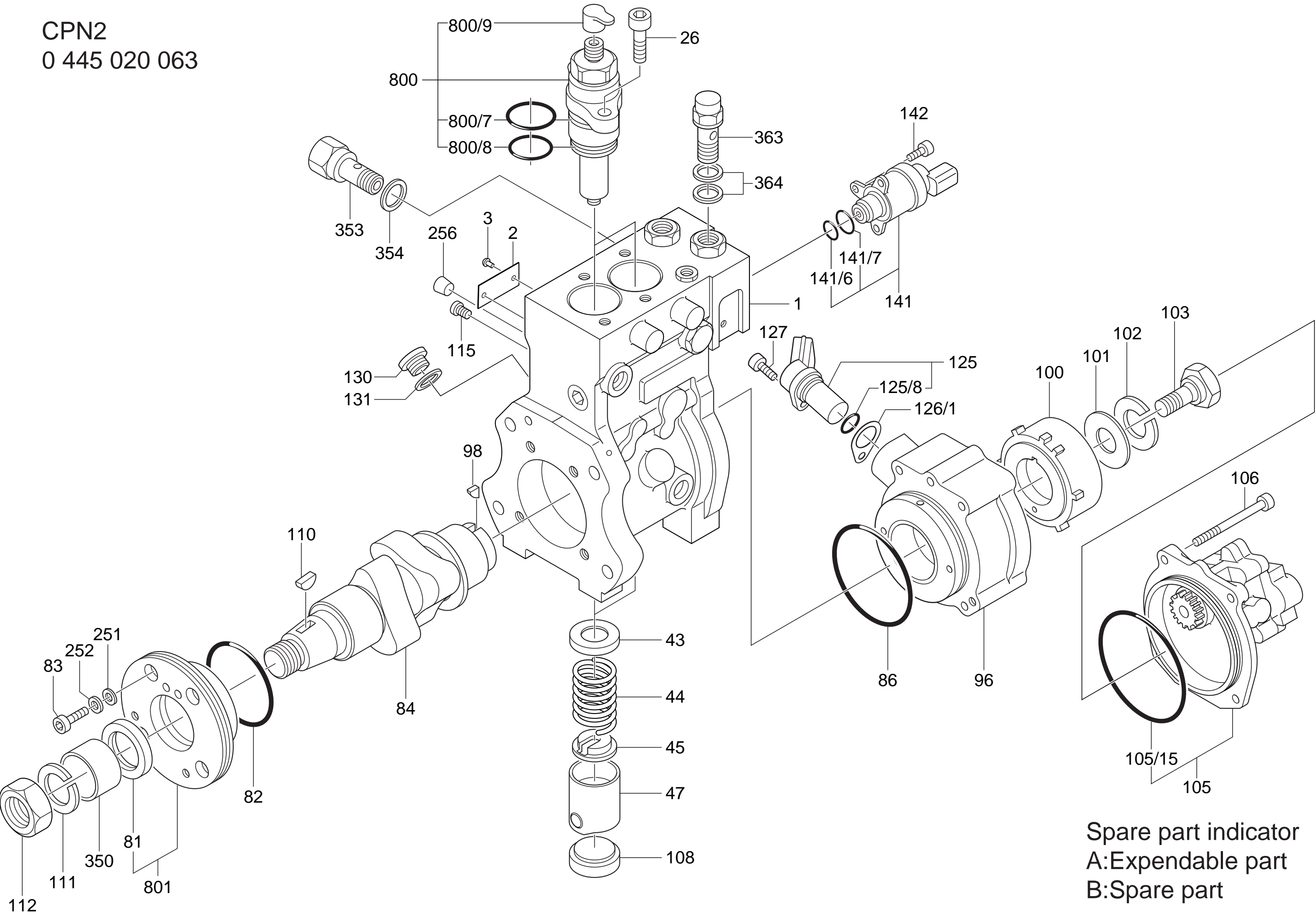
CPN2 PART LIST 0 445 020 062

KEY NO.	BOSCH NO.	PART NAME	SPARE PARTS	QTY	REMARKS
119/800/14	2 469 403 075	VALVE SPRING	B	2	
119/800/15	2 469 403 074	O RING	A	2	
119/800/16	2 469 403 073	SCREW PLUG	B	2	
120	2 469 403 076	TORX FILLISTER SCREW	A	4	
125	0 261 210 151	SPEED SENSOR	B	1	Order from AA. See note below.
125/8	2 260 210 310	O RING	A	1	Order from AA. See note below.
126/1	2 469 403 127	SHIM	B	1	t=0.1
126/1	2 469 403 128	SHIM	B	1	t=0.3
126/1	2 469 403 268	SHIM	B	1	t=0.4
127	2 469 403 072	TORX FILLISTER SCREW	B	1	
130	2 469 403 118	SCREW PLUG	B	1	
131	2 469 403 119	GASKET	A	1	
350	2 469 403 122	RPROTECTION SLEVE	B	1	
800	2 469 403 622	HIGH PRESSURE ASSY	B	2	
800/7	2 469 403 022	SEAL RING	A	2	
800/8	2 469 403 154	SEAL RING	A	2	
800/9	2 469 403 024	CAP	B	2	

Note:

The distributor must order these parts directly from AA.

CPN2
0 445 020 063



Spare part indicator
A:Expendable part
B:Spare part

CPN2 PART LIST 0 445 020 063

KEY NO.	BOSCH NO.	PART NAME	SPARE PARTS	QTY	REMARKS
1	2 469 403 540	PUMP HOUSING	B	1	
2	2 469 403 590	NAME PLATE	B	1	
3	2 469 403 104	NAIL	B	2	
26	2 469 403 504	SOCKET HEAD BOLT	B	4	
43	2 469 403 061	SPRING SEAT	B	2	
44	2 469 403 062	COMPRESSION SPRING	B	2	
45	2 469 403 063	SPRING SEAT	B	2	
47	2 469 403 466	TAPPET	B	2	
81	2 469 403 198	RADIAL SEAL	A	1	
82	2 469 403 065	O RING	A	1	
83	2 469 403 039	TORX FILLISTER SCREW	B	4	
84	2 469 403 555	CAMSHAFT	B	1	
86	2 469 403 152	O RING	A	1	
96	2 469 403 319	BEARING END PLATE	B	1	
98	2 469 403 026	WOODRUFF KEY	A	1	
100	2 469 403 549	INTERNAL GEARED WHEEL	B	1	
101	2 469 403 035	WASHER	A	1	
102	2 469 403 036	CONICAL SPRING WASHER	A	1	
103	2 469 403 038	HEXAGON SCREW	A	1	
105	0 440 020 080	GEAR PUMP	B	1	Order from AA. See note below.
105/15	2 440 210 044	O RING	A	1	Order from AA. See note below.
106	2 469 403 130	TORX FILLISTER SCREW	B	4	
108	2 469 403 066	PLUG	A	2	
110	2 469 403 068	WOODRUFF KEY	A	1	
111	2 469 403 550	SPRING LOCK WASHER	A	1	
112	2 469 403 551	HEXAGON NUT	A	1	
115	2 469 403 067	PLUG	A	2	
125	0 261 210 151	SPEED SENSOR	B	1	Order from AA. See note below.
125/8	2 260 210 310	O RING	A	1	Order from AA. See note below.
126/1	2 469 403 127	SHIM	B	1	t=0.1
126/1	2 469 403 128	SHIM	B	1	t=0.3
126/1	2 469 403 268	SHIM	B	1	t=0.4
127	2 469 403 072	TORX FILLISTER SCREW	B	1	
130	2 469 403 118	SCREW PLUG	B	1	
131	2 469 403 119	GASKET	A	1	
141	0 928 400 617	METERING UNIT	B	1	Order from AA. See note below.
141/6	1 928 300 718	O RING	A	1	Order from AA. See note below.
141/7	1 928 300 719	O RING	A	1	Order from AA. See note below.
142	2 469 403 351	BOLT	B	3	
251	2 469 403 053	GASKET	A	4	
252	2 469 403 214	SHIM	B	4	
256	2 469 403 222	PLUG	B	1	
350	2 469 403 529	PROTECTION SLEEVE	B	1	
353	2 469 403 530	OVER FLOW VALVE	B	1	
354	2 469 403 179	GASKET	A	1	
363	2 469 403 231	EYE BOLT	B	1	
364	2 469 403 094	GASKET	A	2	
800	2 469 403 622	HIGH PRESSURE ASSY	B	2	
800/7	2 469 403 022	SEAL RING	A	2	

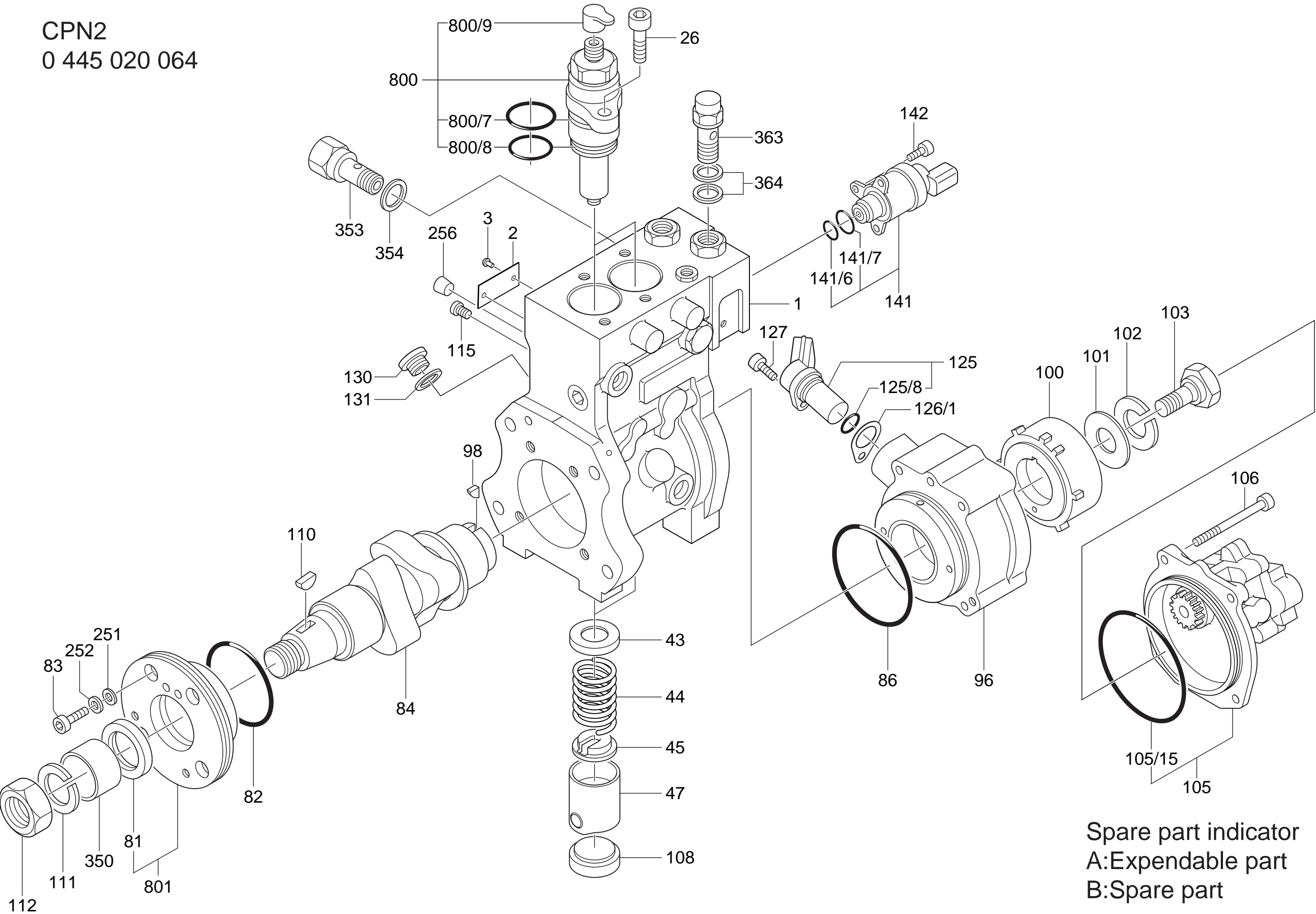
CPN2 PART LIST 0 445 020 063

KEY NO.	BOSCH NO.	PART NAME	SPARE PARTS	QTY	REMARKS
800/8	2 469 403 154	SEAL RING	A	2	
800/9	2 469 403 024	CAP	B	2	
801	2 469 403 763	BEARING END PLATE	B	1	

Note:

The distributor must order these parts directly from AA.

CPN2
0 445 020 064



Spare part indicator
A:Expendable part
B:Spare part

CPN2 PART LIST 0 445 020 064

KEY NO.	BOSCH NO.	PART NAME	SPARE PARTS	QTY	REMARKS
1	2 469 403 540	PUMP HOUSING	B	1	
2	2 469 403 590	NAME PLATE	B	1	
3	2 469 403 104	NAIL	B	2	
26	2 469 403 504	SOCKET HEAD BOLT	B	4	
43	2 469 403 061	SPRING SEAT	B	2	
44	2 469 403 561	COMPRESSION SPRING	B	2	
45	2 469 403 063	SPRING SEAT	B	2	
47	2 469 403 537	TAPPET	B	2	
81	2 469 403 198	RADIAL SEAL	A	1	
82	2 469 403 065	O RING	A	1	
83	2 469 403 039	TORX FILLISTER SCREW	B	4	
84	2 469 403 552	CAMSHAFT	B	1	
86	2 469 403 152	O RING	A	1	
96	2 469 403 319	BEARING END PLATE	B	1	
98	2 469 403 026	WOODRUFF KEY	A	1	
100	2 469 403 549	INTERNAL GEARED WHEEL	B	1	
101	2 469 403 035	WASHER	A	1	
102	2 469 403 036	CONICAL SPRING WASHER	A	1	
103	2 469 403 038	HEXAGON SCREW	A	1	
105	0 440 020 080	GEAR PUMP	B	1	Order from AA. See note below.
105/15	2 440 210 044	O RING	A	1	Order from AA. See note below.
106	2 469 403 130	TORX FILLISTER SCREW	B	4	
108	2 469 403 066	PLUG	A	2	
110	2 469 403 068	WOODRUFF KEY	A	1	
111	2 469 403 550	SPRING LOCK WASHER	A	1	
112	2 469 403 551	HEXAGON NUT	A	1	
115	2 469 403 067	PLUG	A	2	
125	0 261 210 151	SPEED SENSOR	B	1	Order from AA. See note below.
125/8	2 260 210 310	O RING	A	1	Order from AA. See note below.
126/1	2 469 403 127	SHIM	B	1	t=0.1
126/1	2 469 403 128	SHIM	B	1	t=0.3
126/1	2 469 403 268	SHIM	B	1	t=0.4
127	2 469 403 072	TORX FILLISTER SCREW	B	1	
130	2 469 403 118	SCREW PLUG	B	1	
131	2 469 403 119	GASKET	A	1	
141	0 928 400 617	METERING UNIT	B	1	Order from AA. See note below.
141/6	1 928 300 718	O RING	A	1	Order from AA. See note below.
141/7	1 928 300 719	O RING	A	1	Order from AA. See note below.
142	2 469 403 351	BOLT	B	3	
251	2 469 403 053	GASKET	A	4	
252	2 469 403 214	SHIM	B	4	
256	2 469 403 222	PLUG	B	1	
350	2 469 403 529	PROTECTION SLEEVE	B	1	
353	2 469 403 530	OVER FLOW VALVE	B	1	
354	2 469 403 179	GASKET	A	1	
363	2 469 403 231	EYE BOLT	B	1	
364	2 469 403 094	GASKET	A	2	
800	2 469 403 622	HIGH PRESSURE ASSY	B	2	
800/7	2 469 403 022	SEAL RING	A	2	

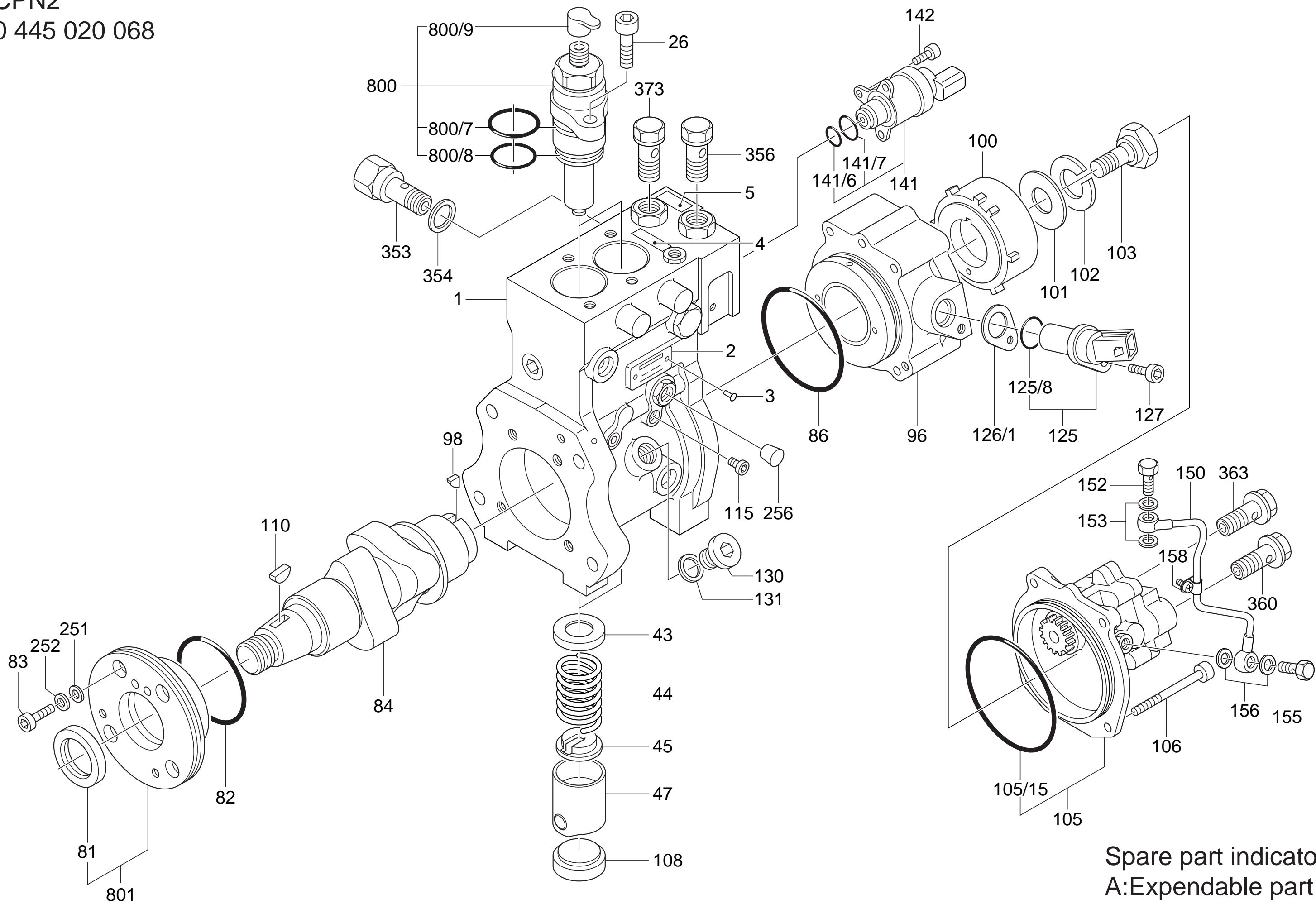
CPN2 PART LIST 0 445 020 064

KEY NO.	BOSCH NO.	PART NAME	SPARE PARTS	QTY	REMARKS
800/8	2 469 403 154	SEAL RING	A	2	
800/9	2 469 403 024	CAP	B	2	
801	2 469 403 767	BEARING END PLATE	B	1	

Note:

The distributor must order these parts directly from AA.

CPN2
0 445 020 068



Spare part indicator
A:Expendable part
B:Spare part

CPN2 PART LIST 0 445 020 068

KEY NO.	BOSCH NO.	PART NAME	SPARE PARTS	QTY	REMARKS
1	2 469 403 576	PUMP HOUSING	B	1	
2	2 469 403 590	NAME PLATE	B	1	
3	2 469 403 104	NAIL	B	2	
4	2 469 403 618	NUMBER PLATE	B	1	
5	2 469 403 578	NUMBER PLATE	B	1	
26	2 469 403 504	SOCKET HEAD BOLT	B	4	
43	2 469 403 061	SPRING SEAT	B	2	
44	2 469 403 561	COMPRESSION SPRING	B	2	
45	2 469 403 063	SPRING SEAT	B	2	
47	2 469 403 537	TAPPET	B	2	
81	2 469 403 198	RADIAL SEAL	A	1	
82	2 469 403 065	O RING	A	1	
83	2 469 403 039	TORX FILLISTER SCREW	B	4	
84	2 469 403 579	CAMSHAFT	B	1	
86	2 469 403 152	O RING	A	1	
96	2 469 403 317	BEARING END PLATE	B	1	
98	2 469 403 026	WOODRUFF KEY	A	1	
100	2 469 403 549	INTERNAL GEARED WHEEL	B	1	
101	2 469 403 035	WASHER	A	1	
102	2 469 403 036	CONICAL SPRING WASHER	A	1	
103	2 469 403 038	HEXAGON SCREW	A	1	
105	0 440 020 083	GEAR PUMP	B	1	Order from AA. See note below.
105/15	2 440 210 044	O RING	A	1	Order from AA. See note below.
106	2 469 403 130	TORX FILLISTER SCREW	B	4	
108	2 469 403 066	PLUG	A	2	
110	2 469 403 068	WOODRUFF KEY	A	1	
115	2 469 403 067	PLUG	A	2	
125	0 261 210 151	SPEED SENSOR	B	1	Order from AA. See note below.
125/8	2 260 210 310	O RING	A	1	Order from AA. See note below.
126/1	2 469 403 127	SHIM	B	1	t=0.1
126/1	2 469 403 128	SHIM	B	1	t=0.3
126/1	2 469 403 268	SHIM	B	1	t=0.4
127	2 469 403 072	TORX FILLISTER SCREW	B	1	
130	2 469 403 118	SCREW PLUG	B	1	
131	2 469 403 406	GASKET	A	1	
141	0 928 400 617	METERING UNIT	B	1	Order from AA. See note below.
141/6	1 928 300 718	O RING	A	1	Order from AA. See note below.
141/7	1 928 300 719	O RING	A	1	Order from AA. See note below.
142	2 469 403 351	BOLT	B	3	
150	2 469 403 580	PIPE	B	1	
152	2 469 403 344	EYE BOLT	B	1	
153	2 469 403 582	GASKET	A	2	
155	2 469 403 344	EYE BOLT	B	1	
156	2 469 403 582	GASKET	A	2	
158	2 469 403 399	PLATE	B	1	
251	2 469 403 053	GASKET	A	4	

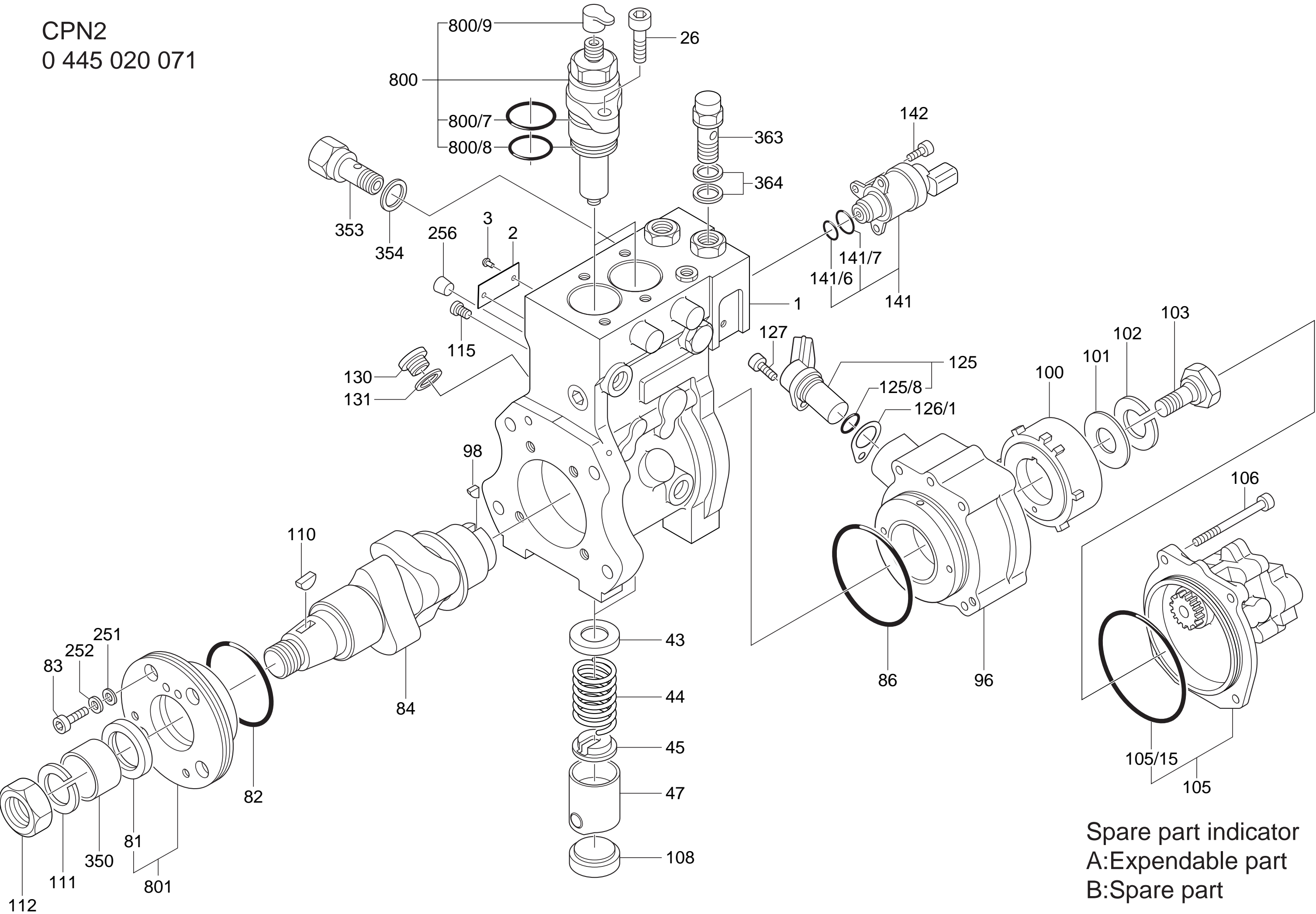
CPN2 PART LIST 0 445 020 068

KEY NO.	BOSCH NO.	PART NAME	SPARE PARTS	QTY	REMARKS
252	2 469 403 214	SHIM	B	4	
256	2 469 403 222	PLUG	B	1	
353	2 469 403 530	OVER FLOW VALVE	B	1	
354	2 469 403 406	GASKET	A	1	
356	2 469 403 480	EYE BOLT	B	1	
360	2 469 403 229	EYE BOLT	B	1	
363	2 469 403 229	EYE BOLT	B	1	
373	2 469 403 480	EYE BOLT	B	1	
800	2 469 403 622	HIGH PRESSURE ASSY	B	2	
800/7	2 469 403 022	SEAL RING	A	2	
800/8	2 469 403 154	SEAL RING	A	2	
800/9	2 469 403 024	CAP	B	2	
801	2 469 403 767	BEARING END PLATE	B	1	

Note:

The distributor must order these parts directly from AA.

CPN2
0 445 020 071



Spare part indicator
A:Expendable part
B:Spare part

CPN2 PART LIST 0 445 020 071

KEY NO.	BOSCH NO.	PART NAME	SPARE PARTS	QTY	REMARKS
1	2 469 403 540	PUMP HOUSING	B	1	
2	2 469 403 590	NAME PLATE	B	1	
3	2 469 403 104	NAIL	B	2	
26	2 469 403 504	SOCKET HEAD BOLT	B	4	
43	2 469 403 061	SPRING SEAT	B	2	
44	2 469 403 062	COMPRESSION SPRING	B	2	
45	2 469 403 063	SPRING SEAT	B	2	
47	2 469 403 466	TAPPET	B	2	
81	2 469 403 198	RADIAL SEAL	A	1	
82	2 469 403 065	O RING	A	1	
83	2 469 403 039	TORX FILLISTER SCREW	B	4	
84	2 469 403 554	CAMSHAFT	B	1	
86	2 469 403 152	O RING	A	1	
96	2 469 403 319	BEARING END PLATE	B	1	
98	2 469 403 026	WOODRUFF KEY	A	1	
100	2 469 403 180	INTERNAL GEARED WHEEL	B	1	
101	2 469 403 035	WASHER	A	1	
102	2 469 403 036	CONICAL SPRING WASHER	A	1	
103	2 469 403 038	HEXAGON SCREW	A	1	
105	0 440 020 081	GEAR PUMP	B	1	Order from AA. See note below.
105/15	2 440 210 044	O RING	A	1	Order from AA. See note below.
106	2 469 403 130	TORX FILLISTER SCREW	B	4	
108	2 469 403 066	PLUG	A	2	
110	2 469 403 068	WOODRUFF KEY	A	1	
111	2 469 403 550	SPRING LOCK WASHER	A	1	
112	2 469 403 551	HEXAGON NUT	A	1	
115	2 469 403 067	PLUG	A	2	
125	0 261 210 151	SPEED SENSOR	B	1	Order from AA. See note below.
125/8	2 260 210 310	O RING	A	1	Order from AA. See note below.
126/1	2 469 403 127	SHIM	B	1	t=0.1
126/1	2 469 403 128	SHIM	B	1	t=0.3
126/1	2 469 403 268	SHIM	B	1	t=0.4
127	2 469 403 072	TORX FILLISTER SCREW	B	1	
130	2 469 403 118	SCREW PLUG	B	1	
131	2 469 403 119	GASKET	A	1	
141	0 928 400 617	METERING UNIT	B	1	Order from AA. See note below.
141/6	1 928 300 718	O RING	A	1	Order from AA. See note below.
141/7	1 928 300 719	O RING	A	1	Order from AA. See note below.
142	2 469 403 351	BOLT	B	3	
251	2 469 403 053	GASKET	A	4	
252	2 469 403 214	SHIM	B	4	
256	2 469 403 222	PLUG	B	1	
350	2 469 403 529	PROTECTION SLEEVE	B	1	
353	2 469 403 530	OVER FLOW VALVE	B	1	
354	2 469 403 179	GASKET	A	1	
363	2 469 403 231	EYE BOLT	B	1	
364	2 469 403 094	GASKET	A	2	
800	2 469 403 622	HIGH PRESSURE ASSY	B	2	
800/7	2 469 403 022	SEAL RING	A	2	

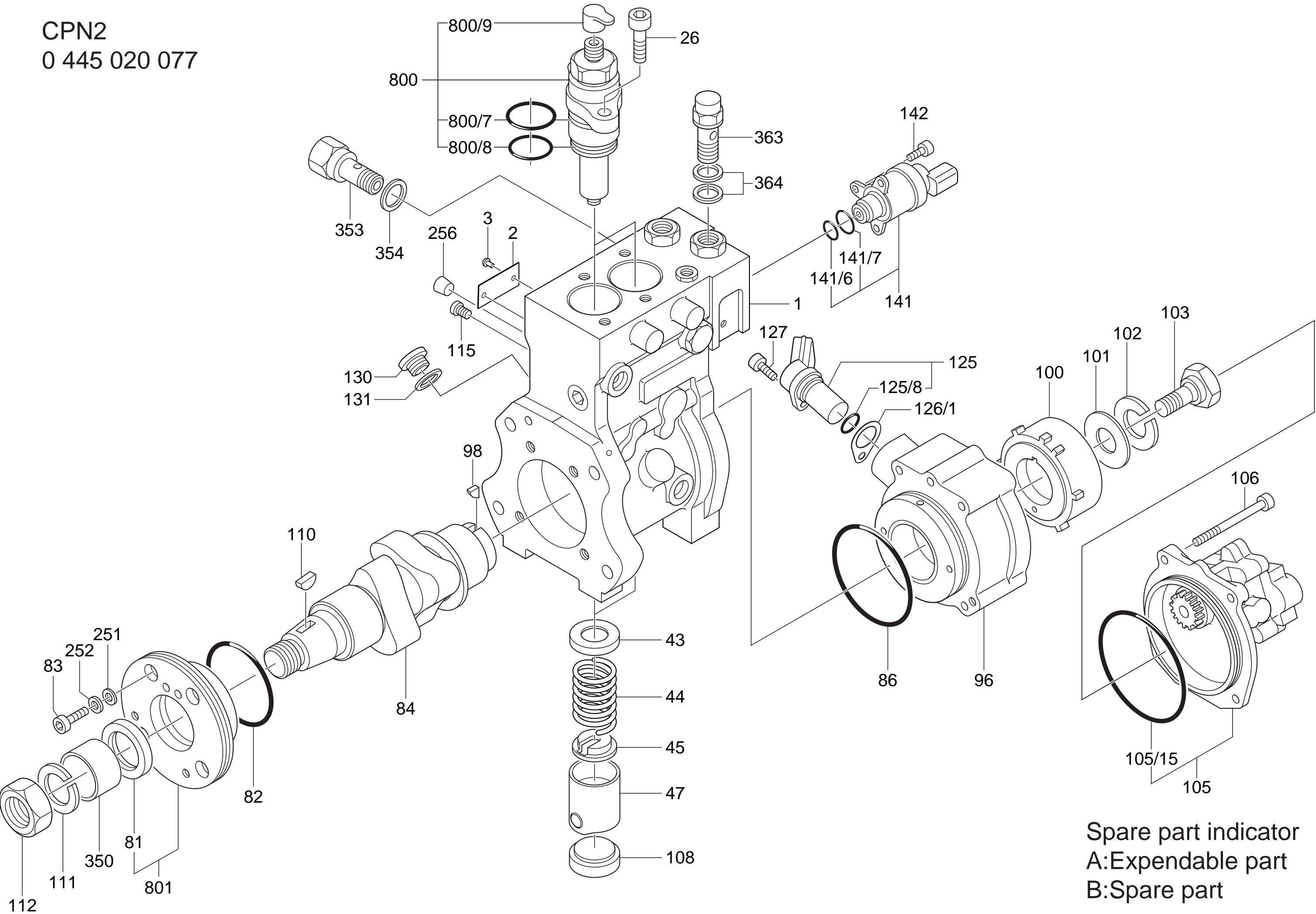
CPN2 PART LIST 0 445 020 071

KEY NO.	BOSCH NO.	PART NAME	SPARE PARTS	QTY	REMARKS
800/8	2 469 403 154	SEAL RING	A	2	
800/9	2 469 403 024	CAP	B	2	
801	2 469 403 763	BEARING END PLATE	B	1	

Note:

The distributor must order these parts directly from AA.

CPN2
0 445 020 077



Spare part indicator
A:Expendable part
B:Spare part

CPN2 PART LIST 0 445 020 077

KEY NO.	BOSCH NO.	PART NAME	SPARE PARTS	QTY	REMARKS
1	2 469 403 540	PUMP HOUSING	B	1	
2	2 469 403 590	NAME PLATE	B	1	
3	2 469 403 104	NAIL	B	2	
26	2 469 403 504	SOCKET HEAD BOLT	B	4	
43	2 469 403 061	SPRING SEAT	B	2	
44	2 469 403 561	COMPRESSION SPRING	B	2	
45	2 469 403 063	SPRING SEAT	B	2	
47	2 469 403 537	TAPPET	B	2	
81	2 469 403 198	RADIAL SEAL	A	1	
82	2 469 403 065	O RING	A	1	
83	2 469 403 039	TORX FILLISTER SCREW	B	4	
84	2 469 403 643	CAMSHAFT	B	1	
86	2 469 403 152	O RING	A	1	
96	2 469 403 319	BEARING END PLATE	B	1	
98	2 469 403 026	WOODRUFF KEY	A	1	
100	2 469 403 180	INTERNAL GEARED WHEEL	B	1	
101	2 469 403 035	WASHER	A	1	
102	2 469 403 036	CONICAL SPRING WASHER	A	1	
103	2 469 403 038	HEXAGON SCREW	A	1	
105	0 440 020 081	GEAR PUMP	B	1	Order from AA. See note below.
105/15	2 440 210 044	O RING	A	1	Order from AA. See note below.
106	2 469 403 130	TORX FILLISTER SCREW	B	4	
108	2 469 403 066	PLUG	A	2	
110	2 469 403 068	WOODRUFF KEY	A	1	
111	2 469 403 550	SPRING LOCK WASHER	A	1	
112	2 469 403 551	HEXAGON NUT	A	1	
115	2 469 403 067	PLUG	A	2	
125	0 261 210 151	SPEED SENSOR	B	1	Order from AA. See note below.
125/8	2 260 210 310	O RING	A	1	Order from AA. See note below.
126/1	2 469 403 127	SHIM	B	1	t=0.1
126/1	2 469 403 128	SHIM	B	1	t=0.3
126/1	2 469 403 268	SHIM	B	1	t=0.4
127	2 469 403 072	TORX FILLISTER SCREW	B	1	
130	2 469 403 118	SCREW PLUG	B	1	
131	2 469 403 119	GASKET	A	1	
141	0 928 400 617	METERING UNIT	B	1	Order from AA. See note below.
141/6	1 928 300 718	O RING	A	1	Order from AA. See note below.
141/7	1 928 300 719	O RING	A	1	Order from AA. See note below.
142	2 469 403 351	BOLT	B	3	
251	2 469 403 053	GASKET	A	4	
252	2 469 403 214	SHIM	B	4	
256	2 469 403 222	PLUG	B	1	
350	2 469 403 529	PROTECTION SLEEVE	B	1	
353	2 469 403 530	OVER FLOW VALVE	B	1	
354	2 469 403 179	GASKET	A	1	
363	2 469 403 231	EYE BOLT	B	1	
364	2 469 403 094	GASKET	A	2	
800	2 469 403 622	HIGH PRESSURE ASSY	B	2	
800/7	2 469 403 022	SEAL RING	A	2	

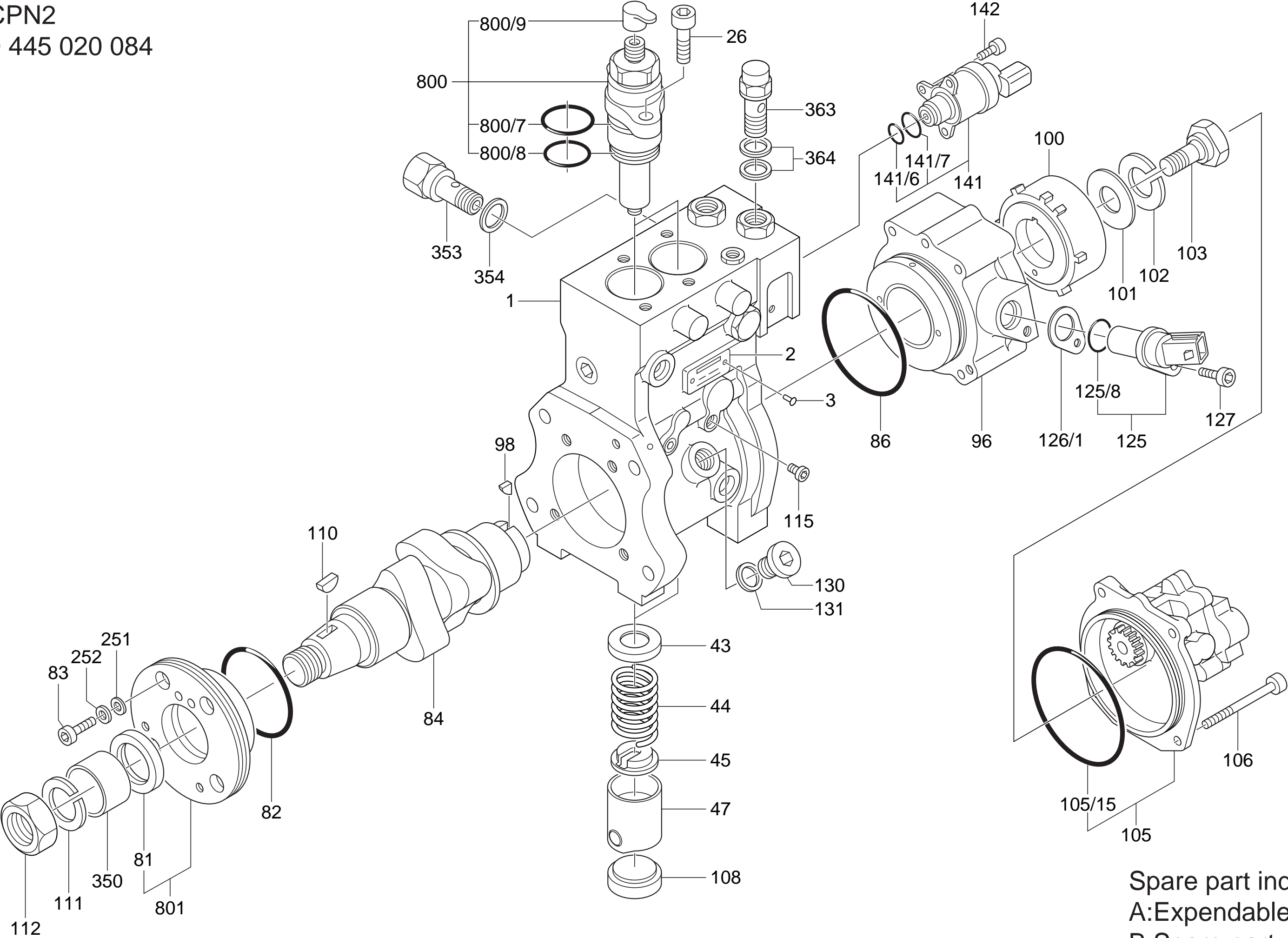
CPN2 PART LIST 0 445 020 077

KEY NO.	BOSCH NO.	PART NAME	SPARE PARTS	QTY	REMARKS
800/8	2 469 403 154	SEAL RING	A	2	
800/9	2 469 403 024	CAP	B	2	
801	2 469 403 767	BEARING END PLATE	B	1	

Note:

The distributor must order these parts directly from AA.

CPN2
0 445 020 084



Spare part indicator
A:Expendable part
B:Spare part

CPN2 PART LIST 0 445 020 084

KEY NO.	BOSCH NO.	PART NAME	SPARE PARTS	QTY	REMARKS
1	2 469 403 542	PUMP HOUSING	B	1	
2	2 469 403 590	NAME PLATE	B	1	
3	2 469 403 104	NAIL	B	2	
26	2 469 403 504	SOCKET HEAD BOLT	B	4	
43	2 469 403 061	SPRING SEAT	B	2	
44	2 469 403 561	COMPRESSION SPRING	B	2	
45	2 469 403 063	SPRING SEAT	B	2	
47	2 469 403 537	TAPPET	B	2	
81	2 469 403 198	RADIAL SEAL	A	1	
82	2 469 403 065	O RING	A	1	
83	2 469 403 039	TORX FILLISTER SCREW	B	4	
84	2 469 403 553	CAMSHAFT	B	1	
86	2 469 403 152	O RING	A	1	
96	2 469 403 317	BEARING END PLATE	B	1	
98	2 469 403 026	WOODRUFF KEY	A	1	
100	2 469 403 180	INTERNAL GEARED WHEEL	B	1	
101	2 469 403 035	WASHER	A	1	
102	2 469 403 036	CONICAL SPRING WASHER	A	1	
103	2 469 403 038	HEXAGON SCREW	A	1	
105	0 440 020 081	GEAR PUMP	B	1	Order from AA. See note below.
105/15	2 440 210 044	O RING	A	1	Order from AA. See note below.
106	2 469 403 130	TORX FILLISTER SCREW	B	4	
108	2 469 403 066	PLUG	A	2	
110	2 469 403 068	WOODRUFF KEY	A	1	
111	2 469 403 550	SPRING LOCK WASHER	B	1	
112	2 469 403 551	HEXAGON NUT	B	1	
115	2 469 403 067	PLUG	A	2	
125	0 261 210 151	SPEED SENSOR	B	1	Order from AA. See note below.
125/8	2 260 210 310	O RING	A	1	Order from AA. See note below.
126/1	2 469 403 127	SHIM	B	1	t=0.1
126/1	2 469 403 128	SHIM	B	1	t=0.3
126/1	2 469 403 268	SHIM	B	1	t=0.4
127	2 469 403 072	TORX FILLISTER SCREW	B	1	
130	2 469 403 118	SCREW PLUG	B	1	
131	2 469 403 406	GASKET	A	1	
141	0 928 400 617	METERING UNIT	B	1	Order from AA. See note below.
141/6	1 928 300 718	O RING	A	1	Order from AA. See note below.
141/7	1 928 300 719	O RING	A	1	Order from AA. See note below.
142	2 469 403 351	BOLT	B	3	
251	2 469 403 053	GASKET	A	4	
252	2 469 403 214	SHIM	B	4	
350	2 469 403 529	PROTECTION SLEEVE	B	1	
353	2 469 403 530	OVER FLOW VALVE	B	1	
354	2 469 403 179	GASKET	A	1	
363	2 469 403 231	EYE BOLT	B	1	
364	2 469 403 094	GASKET	B	2	

CPN2 PART LIST 0 445 020 084

KEY NO.	BOSCH NO.	PART NAME	SPARE PARTS	QTY	REMARKS
800	2 469 403 622	HIGH PRESSURE ASSY	B	2	
800/7	2 469 403 022	SEAL RING	A	2	
800/8	2 469 403 154	SEAL RING	A	2	
800/9	2 469 403 024	CAP	B	2	
801	2 469 403 767	BEARING END PLATE	B	1	

Note:

The distributor must order these parts directly from AA.