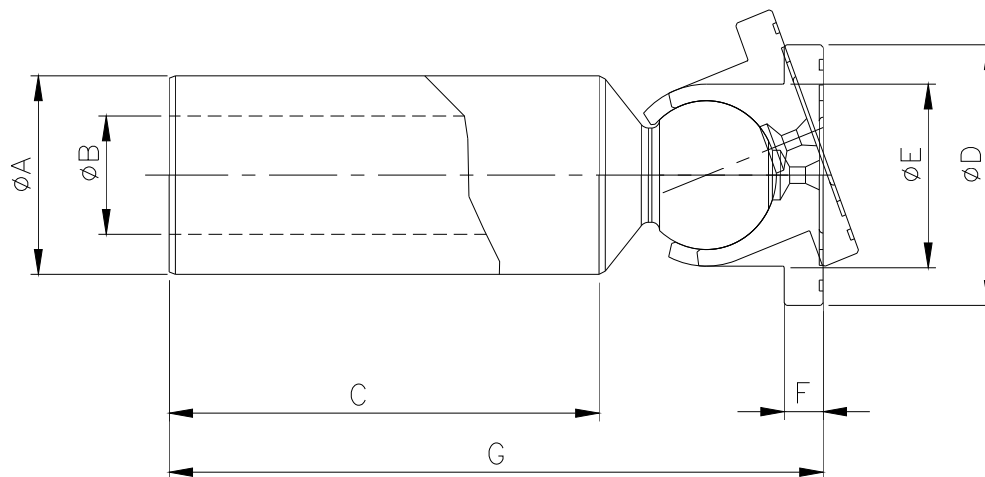
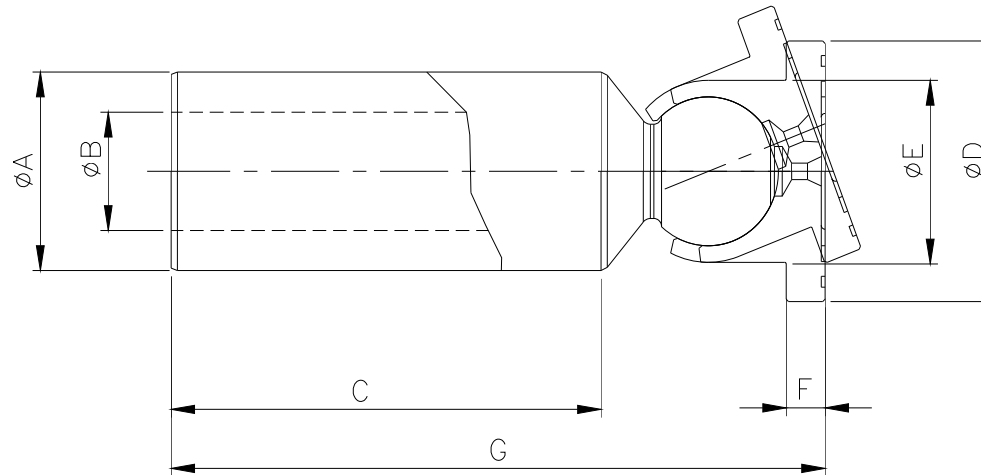
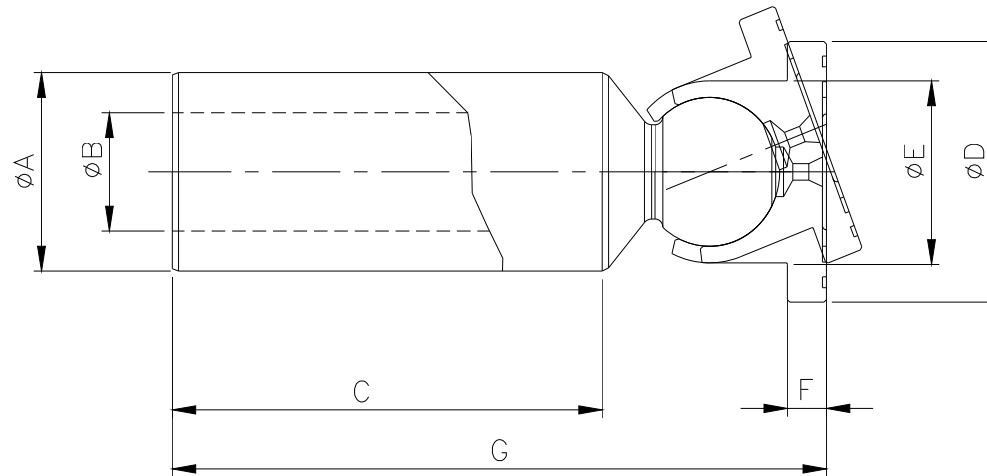


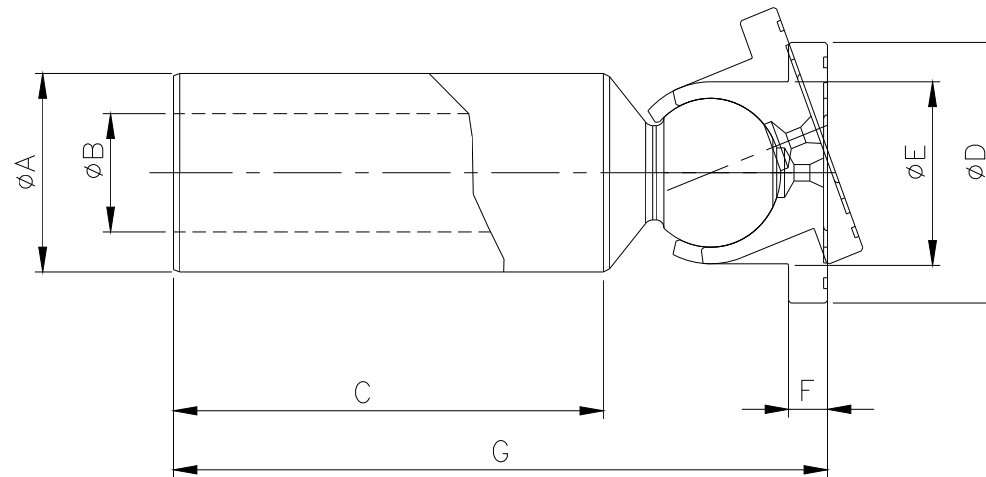
NO	P/NO	MODEL	A	B	C	D	E	F	G	REMARK
1	A4V250-PIA-01	A4V250	31.2	17	88.7	44.6	30.8	7	128.1	
2	A4V500-PIA-01	A4V500	39.3	22.0	111.3	56.4	39	8.9	160.8	
3	A10V17-PIA-01	A10V17	12.5	8	29.2	16	12	3.4	43.8	
4	A10V21-PIA-01	A10V21	14.5	10	28.4	17	12.8	2.8	43.7	A10V23과 공용
5	A10V28-PIA-01	A10V28	14.5	10.2	34.4	19	13.8	3.6	51.5	
6	A10V40-PIA-01	A10V40	17	12.5	39.7	21.3	15.6	4	59.9	
7	A10V43-PIA-01	A10V43	17	12.7	39.5	21.3	15.6	4	60	
8	A10V71SR-PIA-01	A10V71SR	20	4	46.5	26	19.0	5	69.7	
9	A10VO71-PIA-01	A10VO71	20	14	46.7	26	18.8	4.8	69.3	
10	AP12-PIA-01	AP12	23.6	15.2	59	33	22.7	5	86	E320B
11	AP2D14-PIA-01	AP2D14	14.5	5	29.7	17.0	12.8	3.1	45.3	NEW TYPE
12	AP2D21-PIA-01	AP2D21	17	5	32	19.8	14.8	3.6	50.6	
13	AP2D25-PIA-01	AP2D25	17.6	3	37.7	20.5	15.3	3.6	56.2	
14	AP2D36-PIA-01	AP2D36	21	5	36.4	25.3	19	5.2	62.8	
15	AP2D38-PIA-01	AP2D38	21	5	36.4	25.3	19	5.2	62.8	
16	AP2D42-PIA-01	AP2D42	21	5	36.4	25.3	19	5.2	62.8	
17	LMF64-PIA-01	LMF64	20	10	50	26.8	18.5	4	73.3	

[illegible]

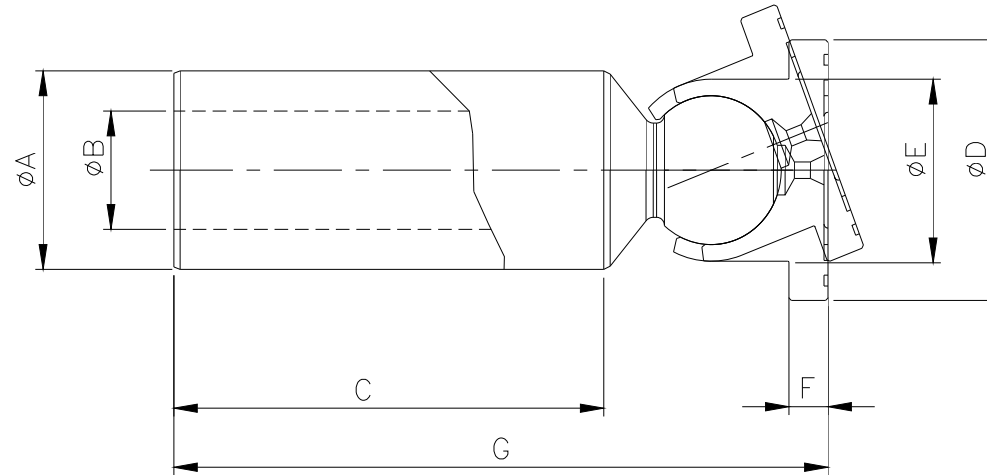
[illegible]

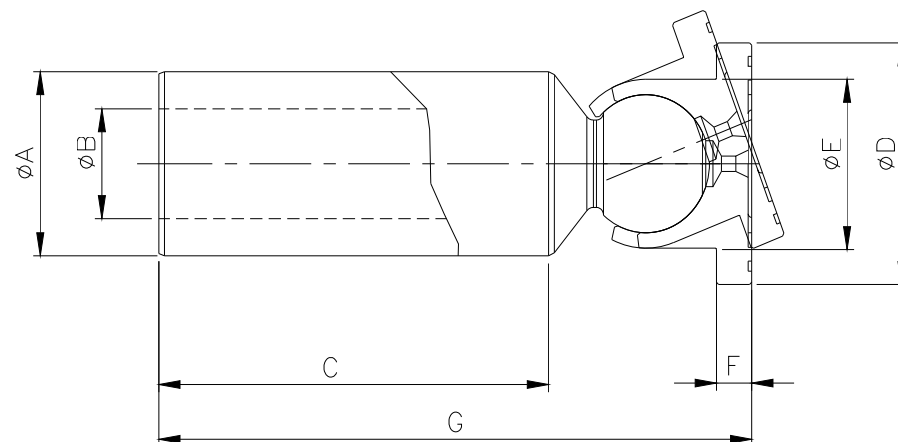


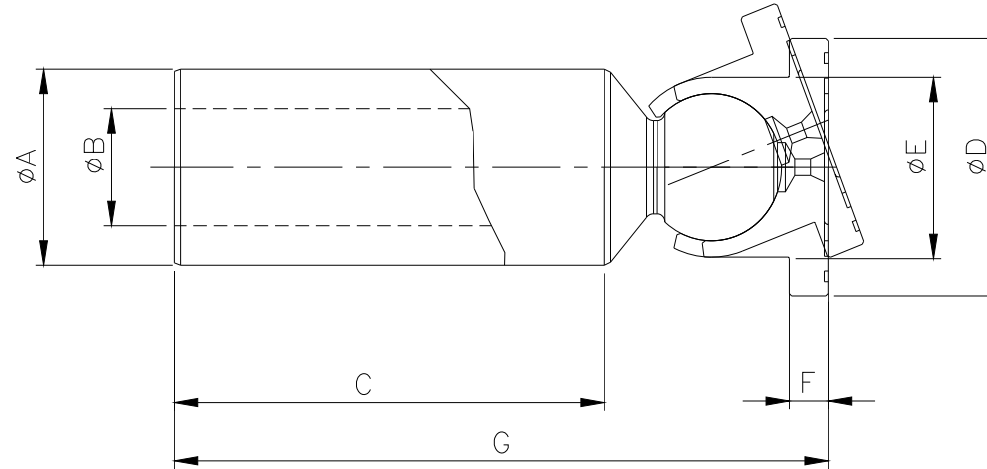
NO	P/NO	MODEL	A	B	C	D	E	F	G	REMARK
1	LPVD45-PIA-01	LPVD45	18	12.5	44.6	24.1	16.7	3.5	65.9	
2	LPVD64-PIA-01	LPVD64	20	14.2	49.0	26.8	18.5	4	73.3	
3	LPVD75-PIA-01	LPVD75	21.6	14.0	54.1	29	20	4.3	79.3	
4	LPVD90-PIA-01	LPVD90	22.5	14.0	56.2	30.2	20.8	4.4	82.1	
5	LPVD100-PIA-01	LPVD100	24.0	15.0	60.3	32.5	22.2	4.8	88	
6	LPVD125-PIA-01	LPVD125	25.0	17.6	62.2	33.8	22.45	5.5	91.6	
7	M2X63-PIA-01	M2X63	20	6	32.1	24	17.5	4	56	
8	M2X96-PIA-01	M2X96	23	9	38.3	27.5	19.5	5	66.1	
9	M2X120-PIA-01	M2X120	25	9	42.0	30	21	5.5	72	
10	M2X146-PIA-01	M2X146	26	9	45.5	31.0	22.5	5.5	79.5	
11	M2X150-PIA-01	M2X150	28	9	45.7	33.5	23.5	5.5	80	
12	M2X170-PIA-01	M2X170	28	9	45.7	33.5	23.5	5.5	80	
13	M2X210-PIA-01	M2X210	30	9	49.5	35.8	26	6	85.5	
14	M2Z150-PIA-01	M2Z150	27	5	48.6	32.7	25	6	80.4	
15	M3V130-PIA-01	M3V130	25.5	16	58.7	32.8	23.5	6.3	89.5	
16	M21-PIA-01	M21	17.2	11.2	57.4	23	15.8	4.3	78.1	
17	M22-PIA-01	M22	19.05	13.5	121.3	25.3	17.5	5	84.6	



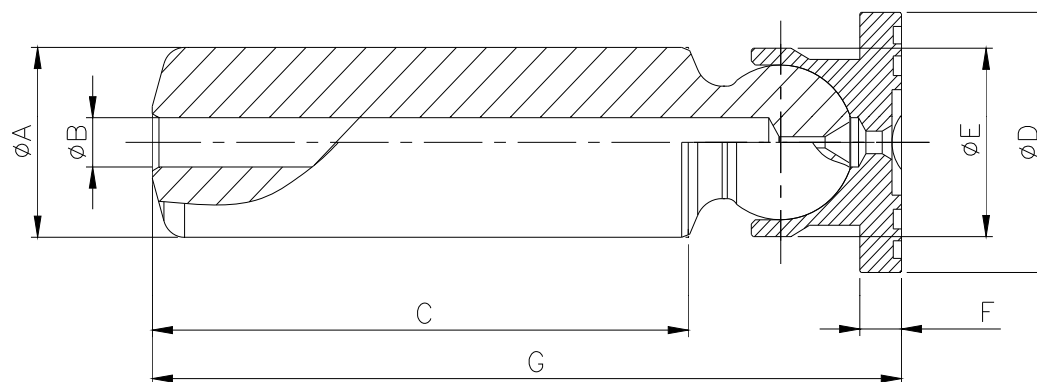
NO	P/NO	MODEL	A	B	C	D	E	F	G	REMARK
1	M23-PIA-01	M23	20.37	3.2	64.5	27.5	18.9	5.3	89.3	
2	MCB172A-PIA-01	MCB172A	25.9	15.2	59.0	33.0	22.7	5	86	
3	MPVO46-PIA-01	MPVO46	19.8	15	83.57	23.4	17.4	3.3	64.3	
4	MX150-PIA-01	MX150	28	20	63.2	36	23.6	5.5	96.9	
5	MX173-PIA-01	MX173	30	22.1	69.5	38.4	28	6	106	
6	MX200-PIA-01	MX200	30	22.2	69.5	38.5	22	6	106.8	
7	MX250-PIA-01	MX250	30	24	74.7	38.5	28	5	105.7	
8	MX500-PIA-01	MX500	40	28.8	77	51	37.3	5	125	
9	MX530-PIA-01	MX530	42	28.8	77	51	—	5	125	
10	NVK45-PIA-01	NVK45	18	5	39	23	15.6	3.5	60.5	
11	NV64-PIA-01	NV64	20	5	46.5	25.5	17.5	4	70	
12	NV70-PIA-01	NV70	22	6	48.5	28	19.6	4.5	75.8	
13	NV80-PIA-01	NV80	22	16	57.1	31	22.0	5.0	85.5	
14	SAUER26-PIA-01	SAUER26	27.7	3.1	74.6	35.6	27.4	4.8	106.2	
15	SHR70-PIA-01	SHR70	19	13.2	61.4	26.4	18.5	5	86.2	
16	SG04(MFB80)-PIA-01	SG04(MFB80)	20.7	10	54.8	28	19.8	4.4	76.4	
17	SG08-PIA-01 (MFB150,160)-PIA-01	SG08(MFB150,160)	26.5	17.6	56.7	32	24.1	4.5	83.2	

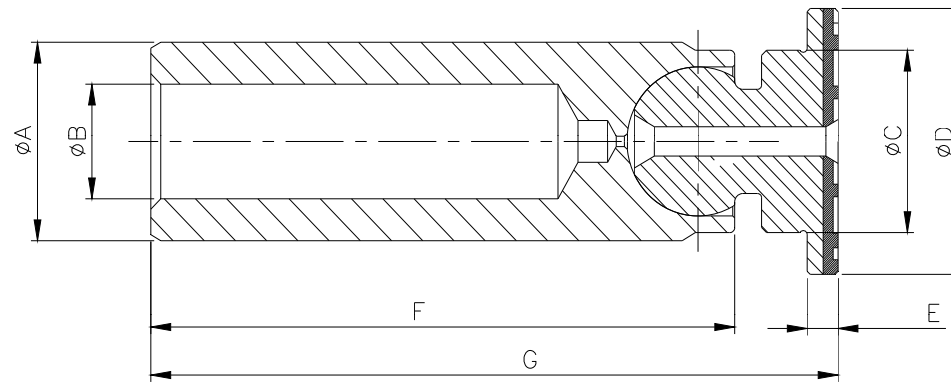
[illegible]

[illegible]

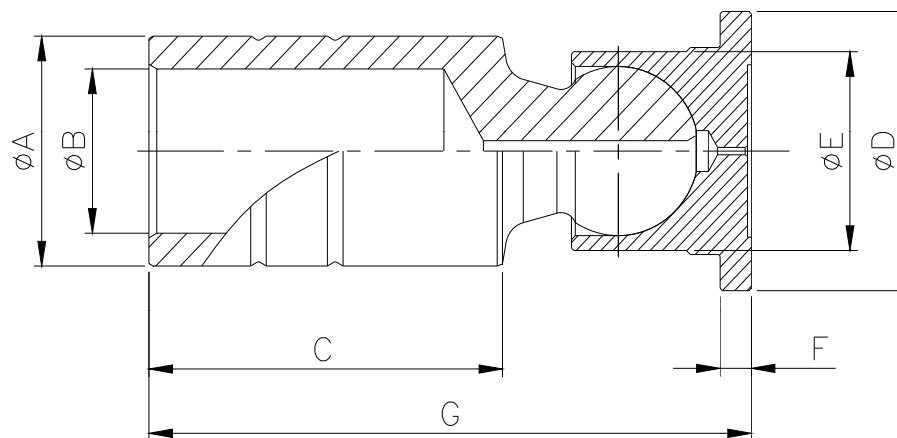
[illegible]

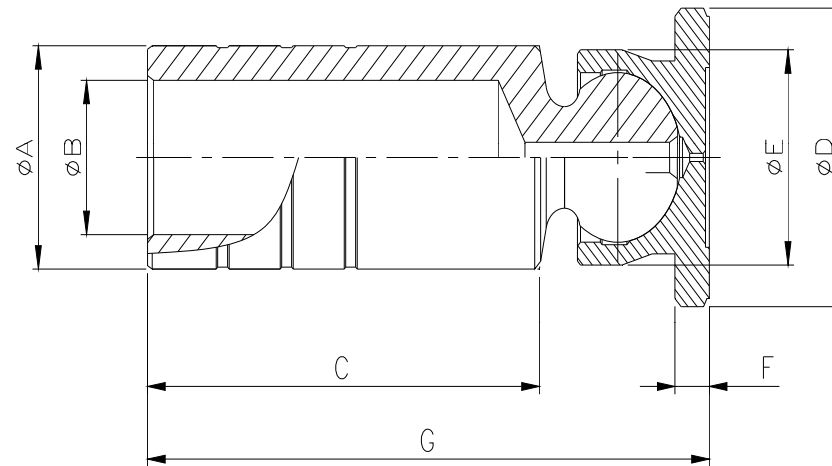


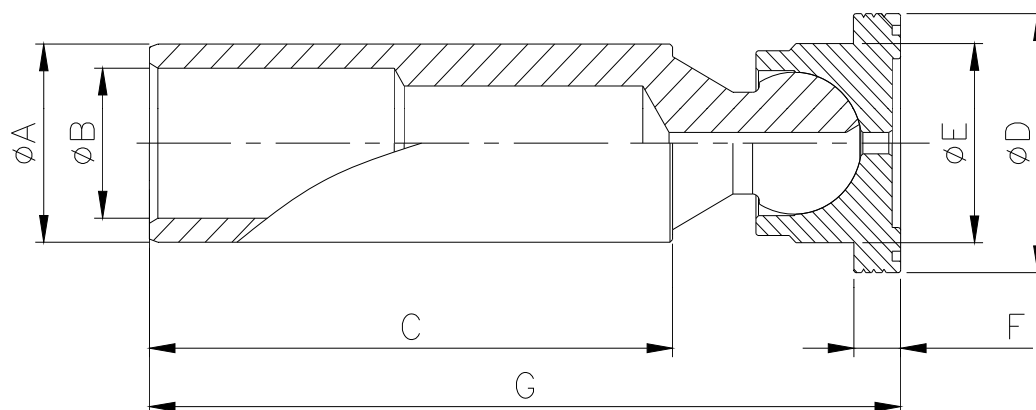
[illegible]

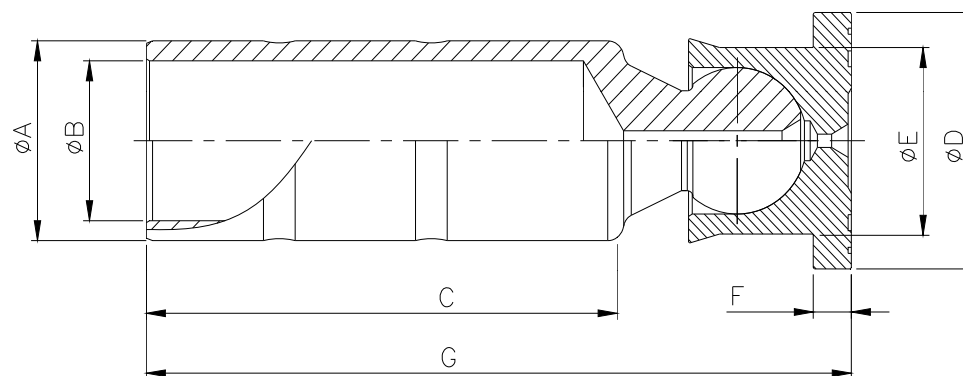


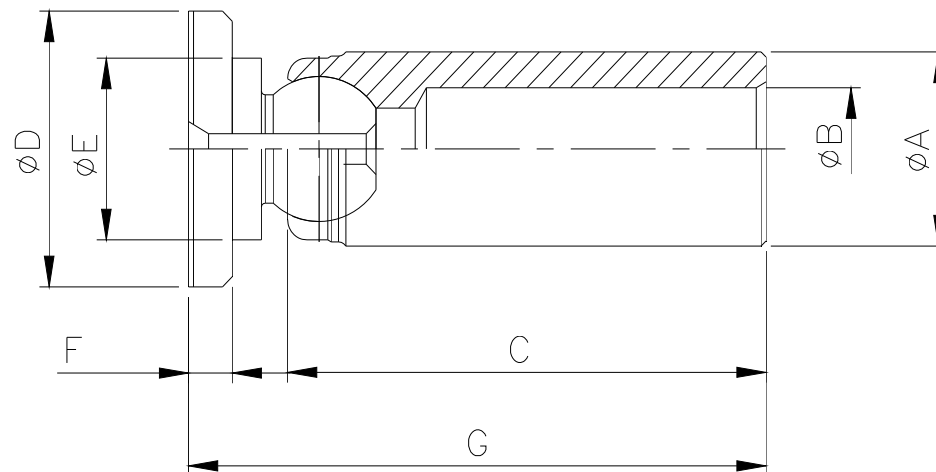
NO	P/NO	MODEL	A	B	C	D	E	F	G	REMARK
1	A11VLO260-PIA-02	A11VLO260	31.2	17	31.5	45	7	102.5	128.5	
2	PC40-PIA-01	PC40	17	9	14.6	20	3.5	47	56.3	
3	VRD63-PIA-01	VRD63(E120B)	19.05	11	17.5	25.4	3.175	58.8	69.2	
4	HPV132-PIA-01 PC300_6-PIA-01	HPV132/PC300-6	25	14.6	20.7	32.6	5.8	83.6	99.4	
5	HPV95-PIA-01	PC200-6	23.2	14	20.5	29.1	5.4	67.4	81.5	
6	HPV95A-PIA-01	PC200-7	23.2	14	20.5	29.1	5.4	65.9	80	
7	MAG150/170-PIA-01	MCA150/170	26.5	18	22	34	7	67.4	83	
8	MAG200-PIA-01	MAG200	30	20	26	37	6.5	75.5	91.5	
9	MAG80-PIA-01 MSF89-PIA-01	MAG80/MSF89	22.5	16.2	17.9	29	6	67.6	80	
10	MAG85-PIA-01	MAG85	22.5	16.2	18	29	6	53.6	66	
11	MK23A-PIA-01	MK23A	30	21.5	29.5	42.5	6	89	110.8	
12	MSF170-PIA-01	MSF170	28	18	24	35.1	7	67.4	82.5	
13	MSF200-PIA-01	MSF200	30	20	26	36	6.5	75.7	91.5	
14	MSF270-PIA-01	MSF270	35.5	26.4	30	44	9	79.5	100.5	
15	PSV2-63-PIA-01	PSV2-63	20.5	14	17.8	24	4.5	58	68.5	
16	PSV2-62-PIA-01	PSV2-62	20.5	14	17.8	27	4.5	49.3	59.5	
17	PSVD2-19-PIA-01	PSVD2-19	17	9	15	20.4	3	43.3	51.4	

[illegible]

[illegible]

[illegible]

[illegible]

[illegible]